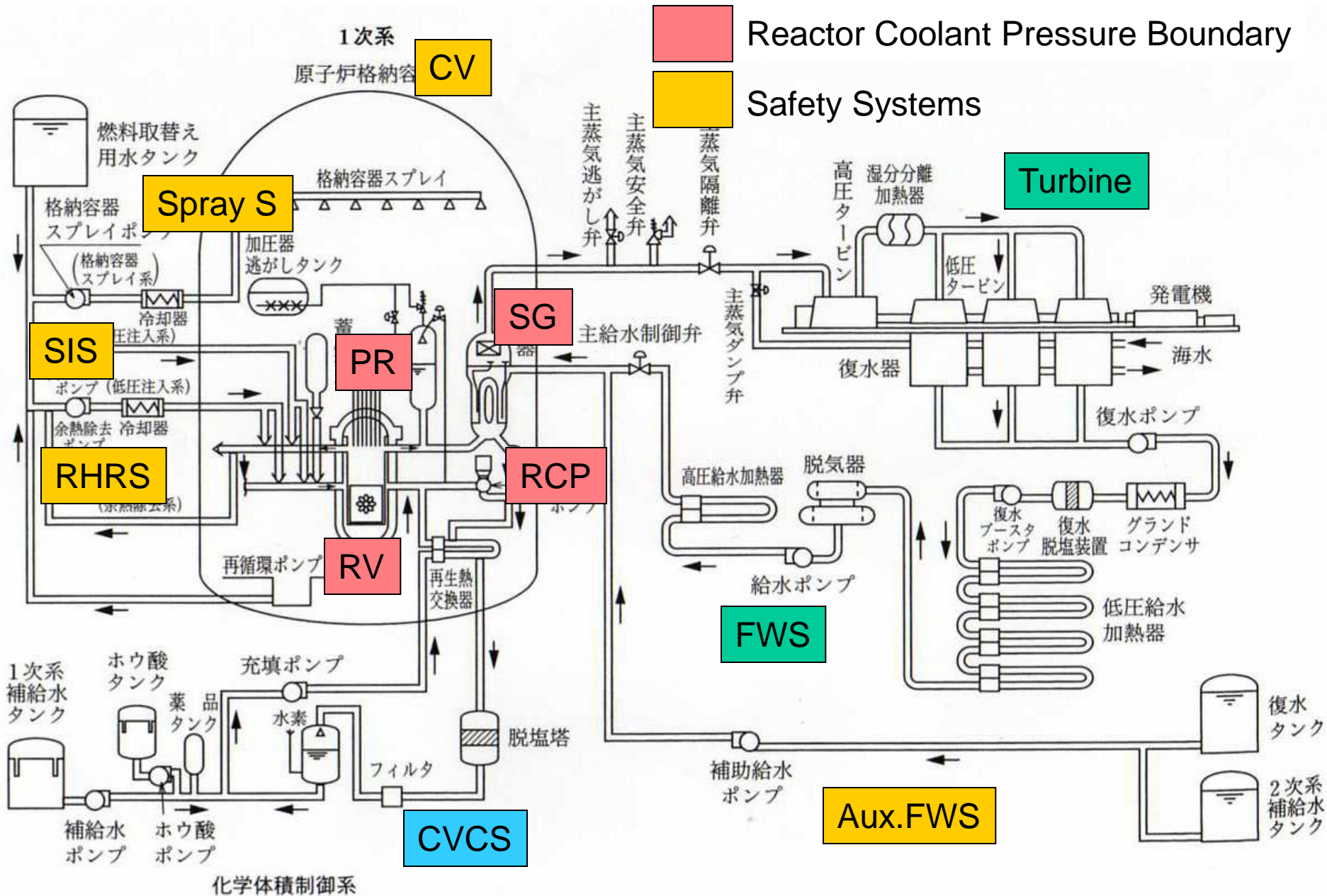


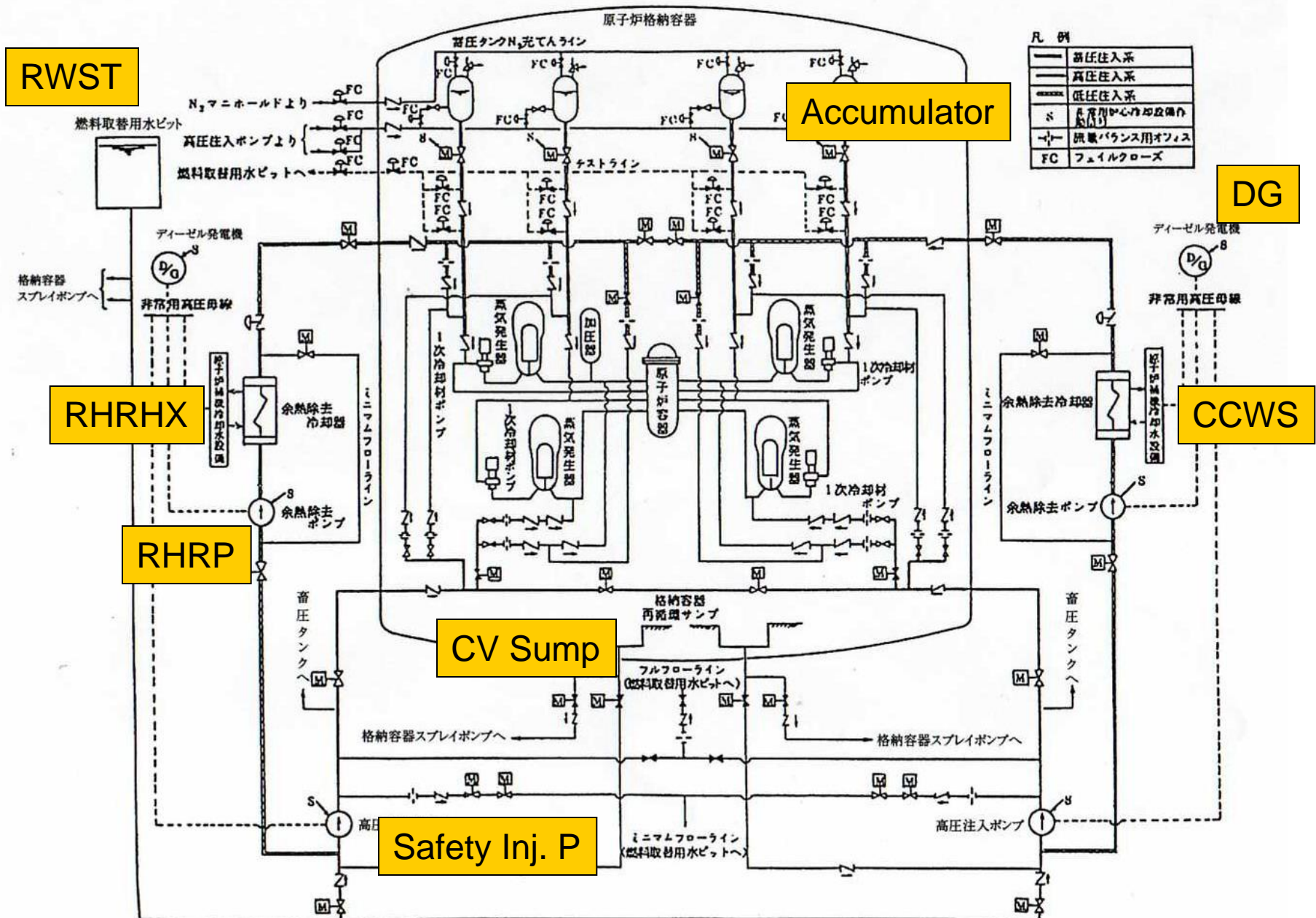
RPSC-Winter Course L-9 (3)

REFERENCE for SEISMIC DESIGN

PWR PLANT SYSTEMS

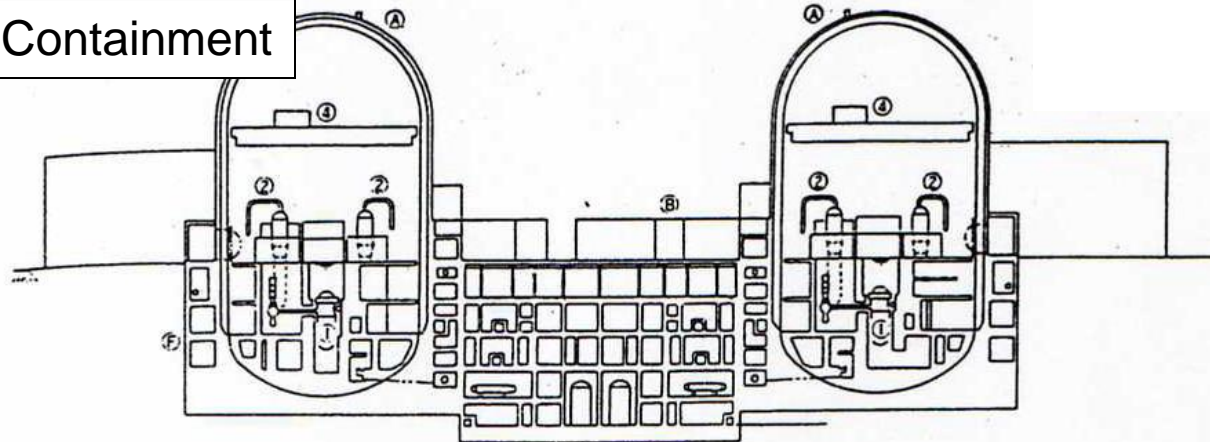


PWR SAFETY SYSTEMS



PLANT LAYOUT

Reactor Containment



主要建屋断面図

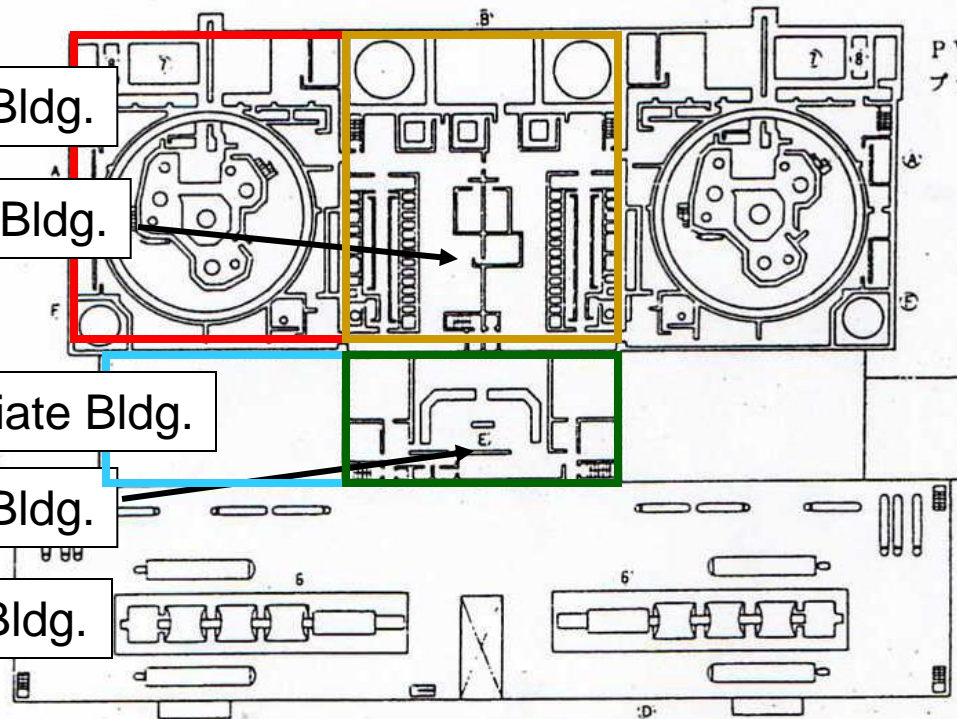
Reactor Bldg.

Auxiliary Bldg.

Intermediate Bldg.

Control Bldg.

Turbine Bldg.

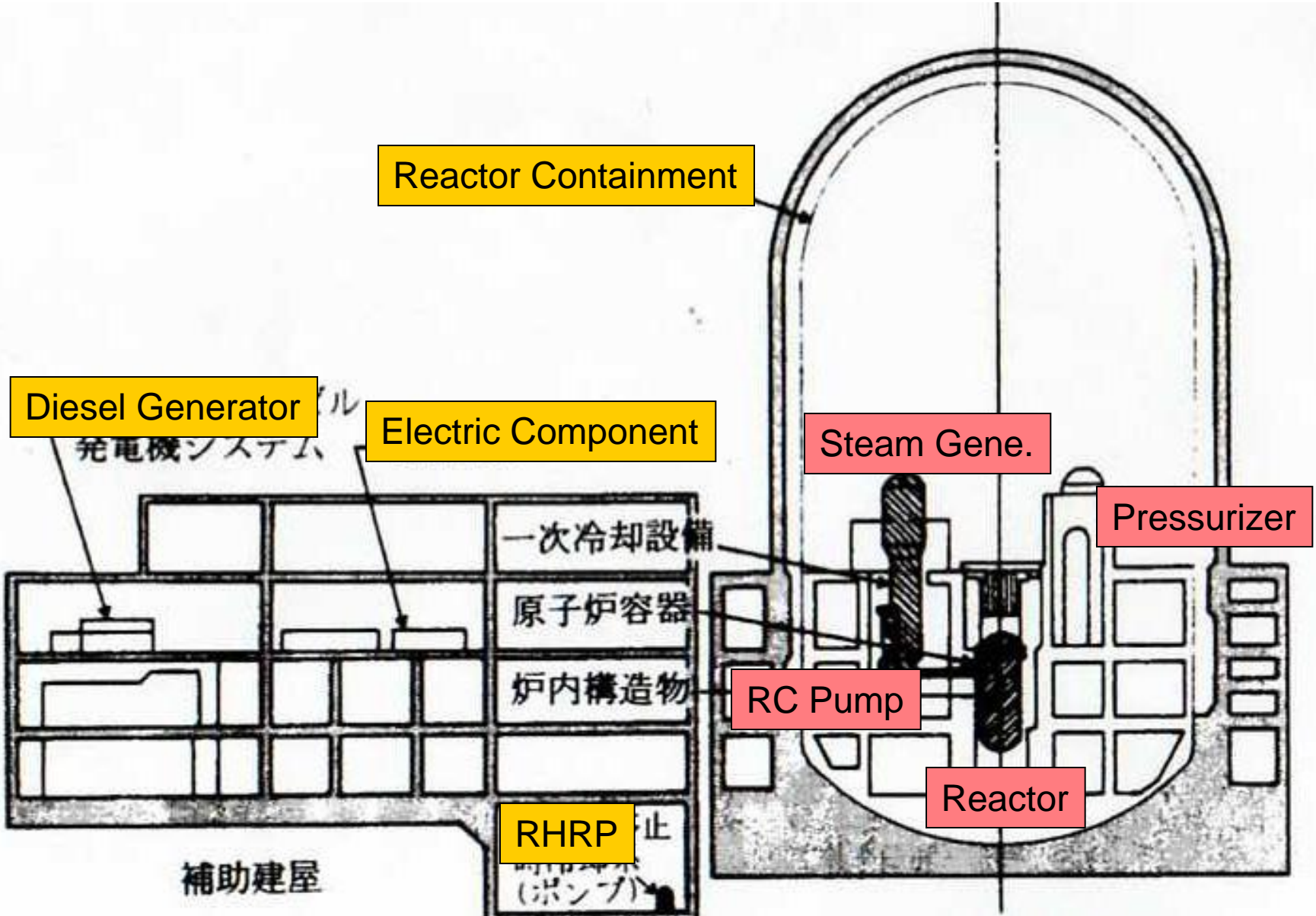


主要建屋平面図

PWRツイン型原子力発電
プラント（鋼製格納容器）

- ㊦原子炉建屋
- ㊧原子炉補助建屋
- ㊨燃料取扱施設
- ㊩タービン建屋
- ㊪中央制御室
- ㊫周辺補機室
- ①原子炉容器
- ②蒸気発生器
- ③一次冷却材ポンプ
- ④格納容器
- ⑤燃料取扱クレーン
- ⑥タービン発電機
- ⑦使用済燃料ピット
- ⑧新燃料貯蔵庫

REACTOR BUILDING AND AUXILIARY BUILDING



Reactor Containment

Diesel Generator

Electric Component

Steam Gene.

Pressurizer

RC Pump

Reactor

RHRP

補助建屋

一次冷却設備

原子炉容器

炉内構造物

PWR 原子炉建屋断面図

LARGE SHAKING TABLE FOR SEISMIC PROOF TEST

Organization: Japan Nuclear Energy Safety Organization (JNES)

Place: Tadotsu Kagawa Prefecture (Shikoku)

Maximum Test Object Weight: 1000 ton

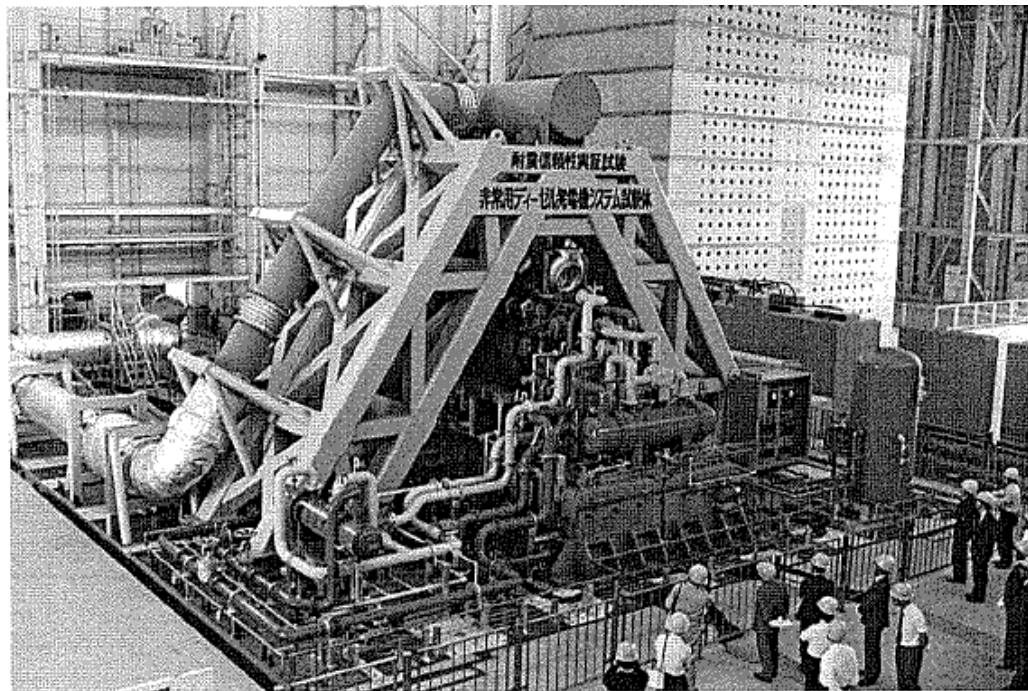
Table Size: 15m × 15m

Max. Acceleration:









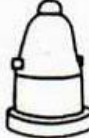
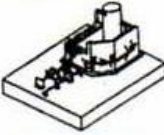



Horizontal: 2.7G (500 ton) 1.8G (1000 ton)

Vertical : 1.4G (500 ton) 0.9G (1000 ton)

Test for
Emergency
Diesel Generator



SEISMIC TEST ITEMS ON LARGE SHAKING TABLE

項目 試驗体名称	実機重量	縮尺	重量	概略図	項目 試驗体名称	実機重量	縮尺	重量	概略図
Steel CV (PWR)	約 3,800 t	1/3.7	350 t (含支持構造物)		Reactor Vessel (BWR)	約 800 t	1/2	600 t (含支持構造物)	
Recirc. System (BWR)	約 800 t	1/1	665 t (含支持構造物)		Diesel Generator	約 600 t	1/1	450 t (含支持構造物)	
Core Internal (PWR)	約 500 t	1/1	555 t (含支持構造物)		Computer System	約 300 t	1/1	81 t (含支持構造物)	
Core Internal (BWR)	約 500 t	1/1	750 t (含支持構造物)		Shutdown Cooling System	約 300 t	1/1 (計装・制御盤等)	294 t (含支持構造物)	
Steel CV (BWR)	約 3,500 t	1/3.2	350 t (含支持構造物)		Main Steam System	約 200t	約 1/2.5 (配管等)	約 450t (含支持構造物)	
RCS. (PWR)	約 1,000 t	1/2.5	525 t (含支持構造物)		PS Concrete CV	約 27,000t	約 1/8	約 500t	
Reactor Vessel (PWR)	約 800 t	1/1.5	700 t (含支持構造物)		Reinforce Concrete CV	約 19,000t	約 1/8	約 470t	